

No.2542-A

## Semi-auto sheet former

This machine automatically performs all steps, water feed, agitation and drainage, following the preset values of water level, timer and pressure. You can form paper sheets efficiently and rapidly with this machine.

You can set the water feed level as desired. When the preset water level is reached, the water is agitated with air for the preset duration. After the water surface has stabilized, water is drained.

Repetitive preparation of specimens with a manual agitator is extremely hard labor. Automatic pneumatic agitation in this machine significantly reduces manpower. In addition, it remarkably improves the quality of specimen formation, since manual agitation usually produces differences among workers, adversely affecting paper strength in particular.

The duration of pneumatic agitation is preset by the timer. Agitation stops when the preset time has elapsed. After the water surface becomes stable, water is drained off.

In the couching process, the diaphragm is expanded with air to drain water from the specimen under pressure. Open the drainage tube and put filter paper sheets on the specimen, and close the squeezing plate. Then couching starts automatically. The specimen is squeezed under the preset pressure, and the pressure is released when the preset time has elapsed. Open the squeezing plate to take out the specimen.

**Paper making dimension:** 158mm in diameter (standard)  
200mm in diameter (Large round type)  
250mm square (square type)

**Drainage time (water):** 4.0 + 0.2 seconds, 20°C + 1°C (standard type)

**Referential standards:** JIS P-8222-1998, ISO 5269/1, TAPPI T205om-88,  
TAPPI T221om-88 (standard type)

**Agitator:** air pressure 0.1 to 0.4MPa

**Couching:** diaphragm, air pressure 0.1MPa

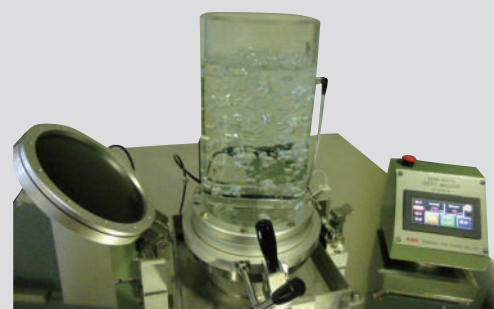
**Option:** white water recovery, suction devices

**Power source:** 100/110VAC 50/60Hz

**Air source:** 0.5MPa

**Outer dimensions:** 900 × 600 × 1500mm (standard type)

**Instrument weight:** 135kg (standard type)



Air agitation

No.2542-B

## KRK pneumatic type standard sheet machine

The conventional paper handmaking needs much labor for agitation of pulp suspension liquid and couching of wet paper mat. KRK pneumatic standard sheet machine is easy to operate, with the paper making process intrinsically the same as those of the conventional paper handmaking. It features the use of air pressure for agitation of suspension liquid and couching of wet paper. The couching plate lined with rubber diaphragm on the lower surface is put on the wet mat, and pressurized with air to perform couching. Air blows through the copper pipe of the annular air stirrer, to agitate pulp suspension liquid.

**Paper making size:** 158mm in diameter, 200cm<sup>2</sup>

**Wire cloth:** upper 150 or 80 mesh, lower 20 mesh

**Drainage time (water):** 4.0 + 0.2 seconds, 20°C + 1°C

**Accessories:** air agitator, drainage receiver

**Couching equipment:** diaphragm effective diameter 191mm,  
air pressure 0.05MPa

**Referential standards:** JIS P-8222-1998, ISO 5269/1, TAPPI T205om-88,  
TAPPI T221om-88

**Air source:** 0.5MPa

**Outer dimensions:** 1100 × 750 × 1550mm

**Instrument weight:** 127kg

